

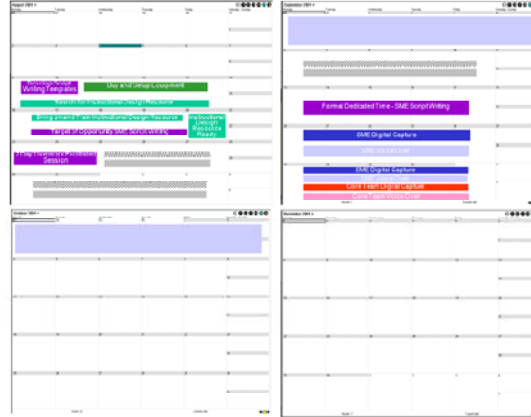


ERP Deployment Testing and Elearning Training

Elearning Development Overview

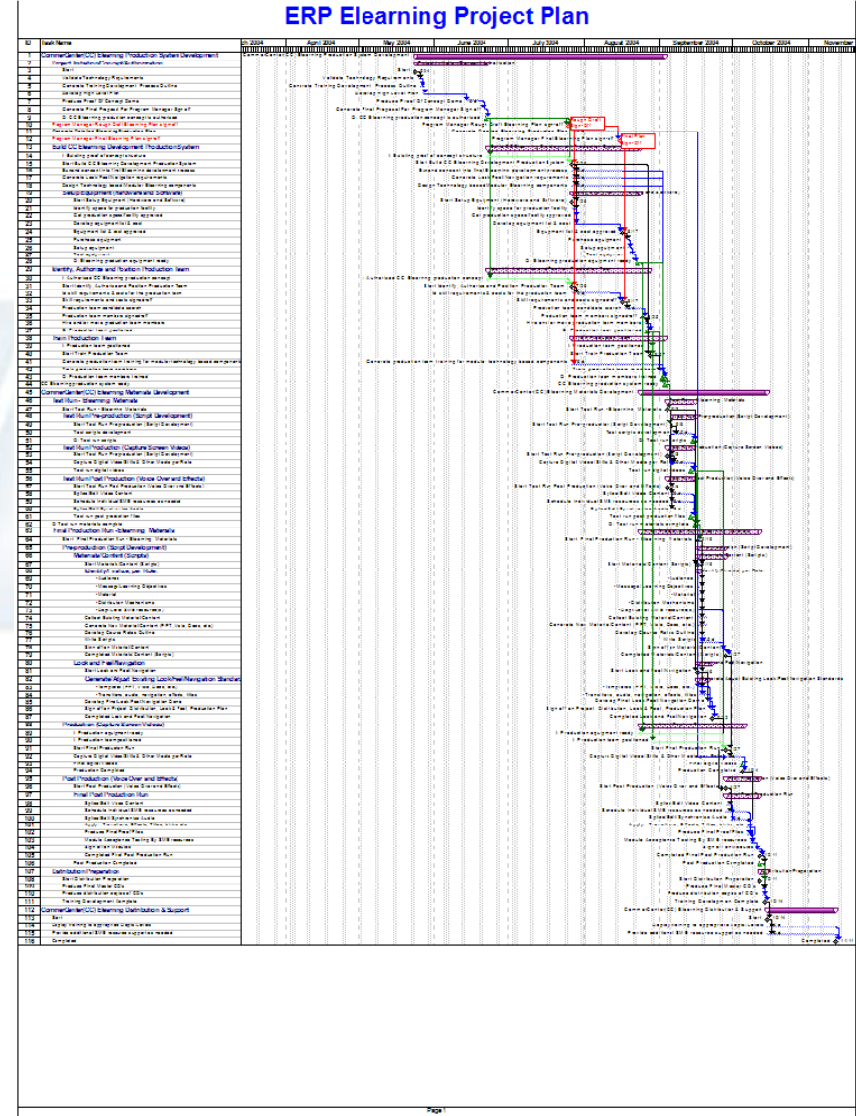
Acme Elearning Plan: Overview

- Equipment Prep
- Instructional Design Resource Prep
- SME Script Writing
- SME Capture
- SME Voice Over
- Core Team Voice Over
- Core Team Voice Over
- Core Team Voice Over
- Target of Opportunity SME Advance Work
- Target of Opportunity Core Team Advance Work



Wall Chart of Project Plan for Developing Elearning Modules

ERP Elearning Project Plan



Testing Protocols

Test Component:	BRANCH TRANSFERS
Test Objective:	Create Transfer Transactions: <ul style="list-style-type: none"> ➔ Planned Transfer Entry ➔ Transfer Shipping Confirmation ➔ Transfer Receiving
Technique:	Validate the following: <ul style="list-style-type: none"> ✓ Source and Destination IDs should be both mandatory. ✓ Search capabilities should be functional by Transfer Number, From Location ID, From Location Name, To Location ID, To Location Name and Item ID. ✓ Transfer Header Notes and Transfer Line Notes should be both accessible. ✓ Item ID search capability by stocking locations with available inventory. ✓ Planned Receipt Date and Shipping Quantity should be both mandatory. ✓ Prior to shipping confirmation, additional item can be added on the next line to allow transfer maintenance functionality. ✓ Search functionalities for Shipment number and Transfer number should be both available in Receiving. ✓ Packing slip number is a required field. ✓ Ability to enter Transfer receiving notes. ✓ Options to receive: Partial Receipt, Over-Receipt, Partial Receipt without future shipments. ✓ Options to Allocate upon Receiving: Allocate Automatically, Allocate Manually, Receive Only. ✓ Period and Year fields are mandatory.
Completion Criteria:	Transactions execute successfully without failure
Special Considerations:	Verify accuracy of data that flows into General Ledger